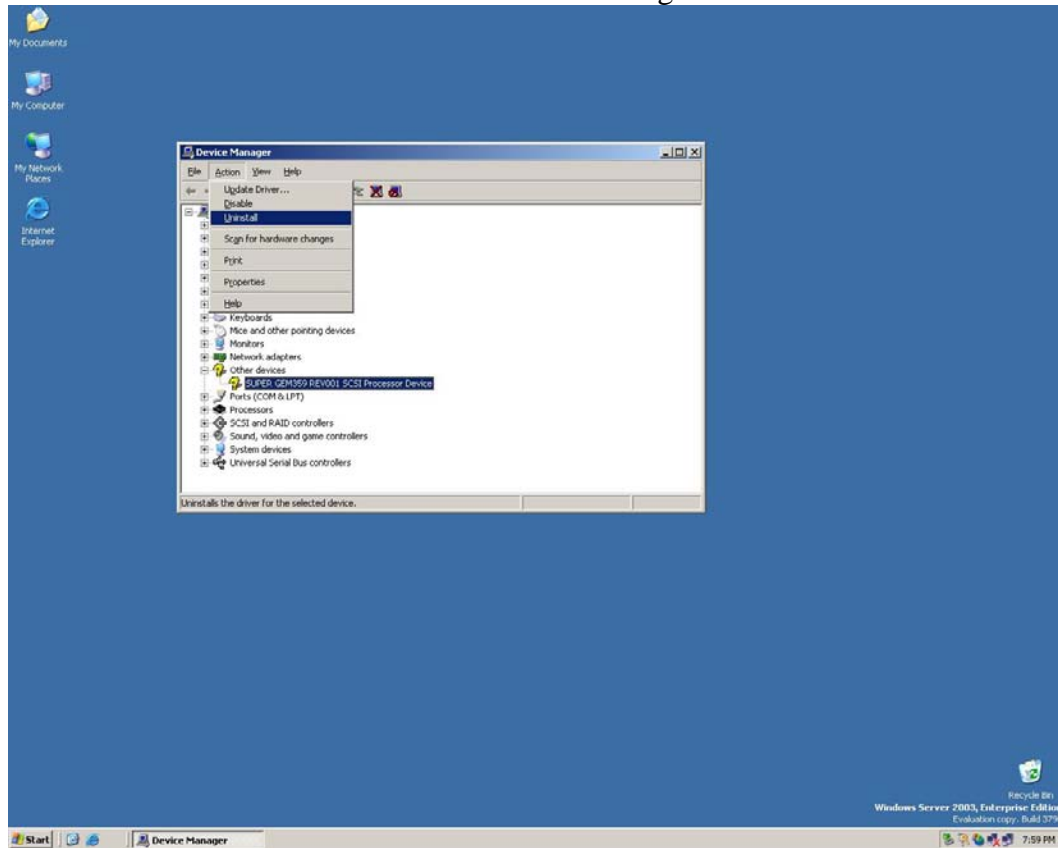
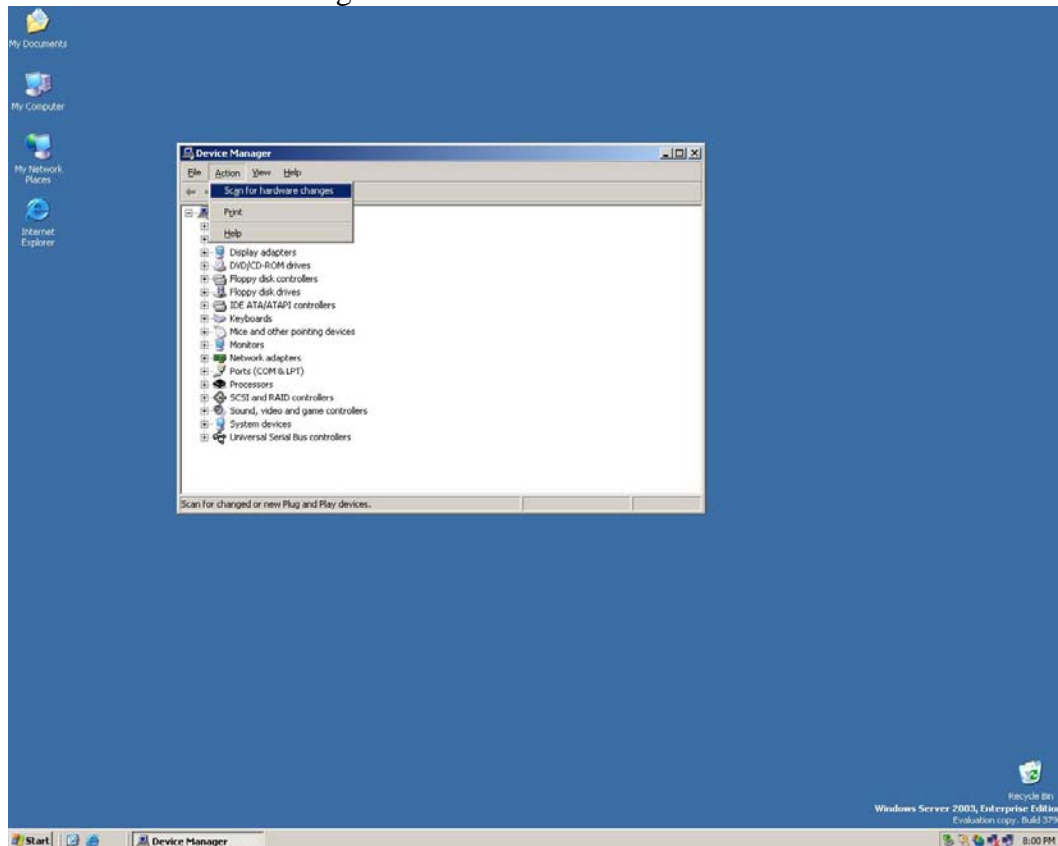


Install GEM359 Logo Driver on Windows 2003

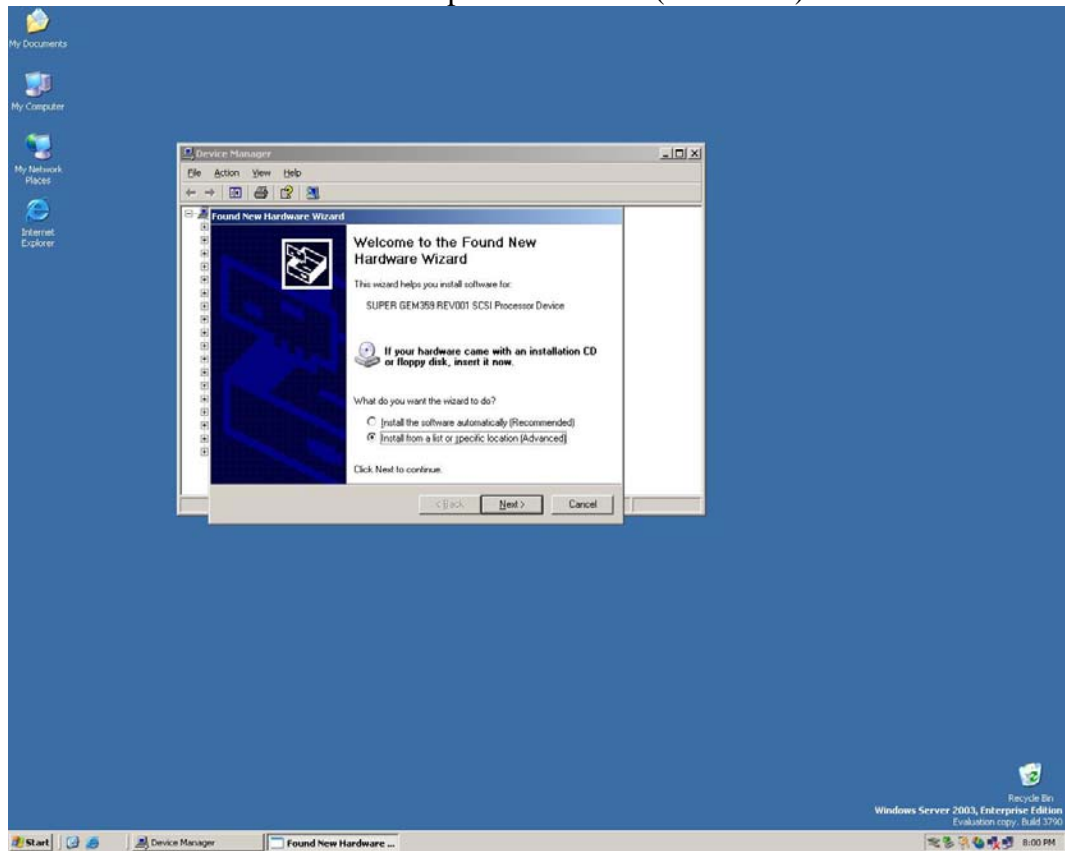
1.Uninstall GEM359 from Windows Device Manager



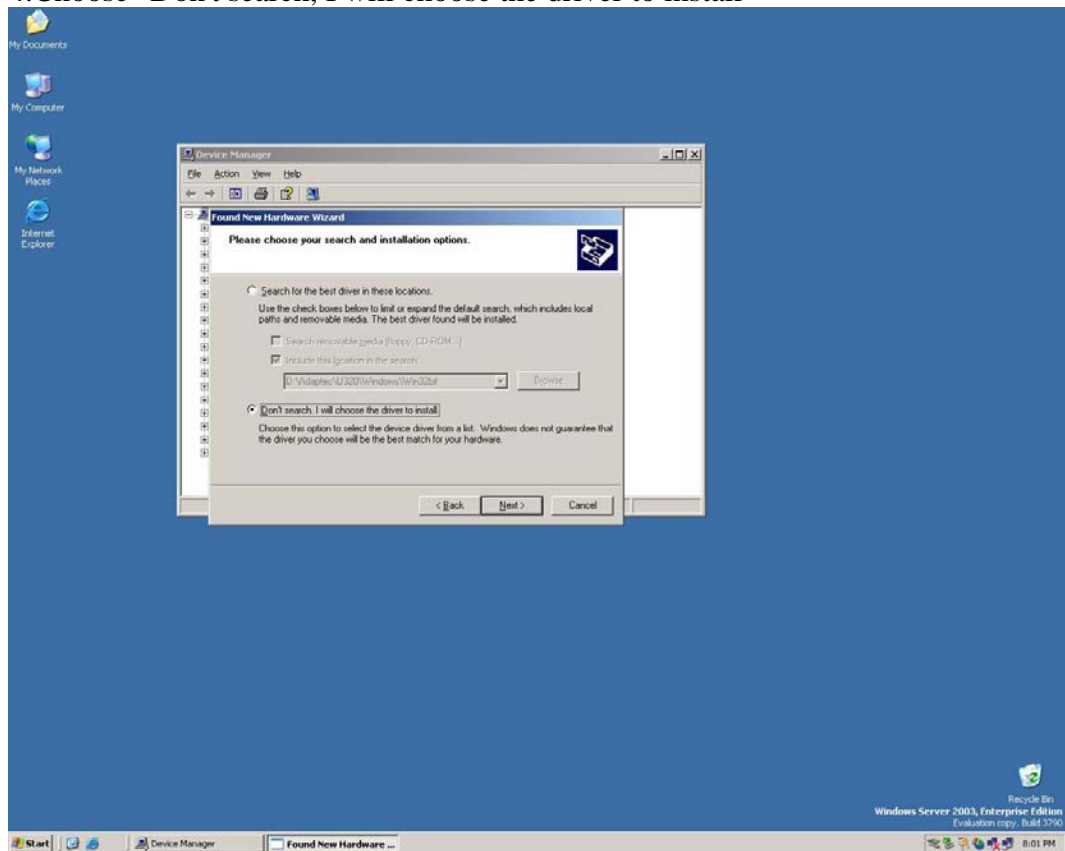
2.Scan for hardware change



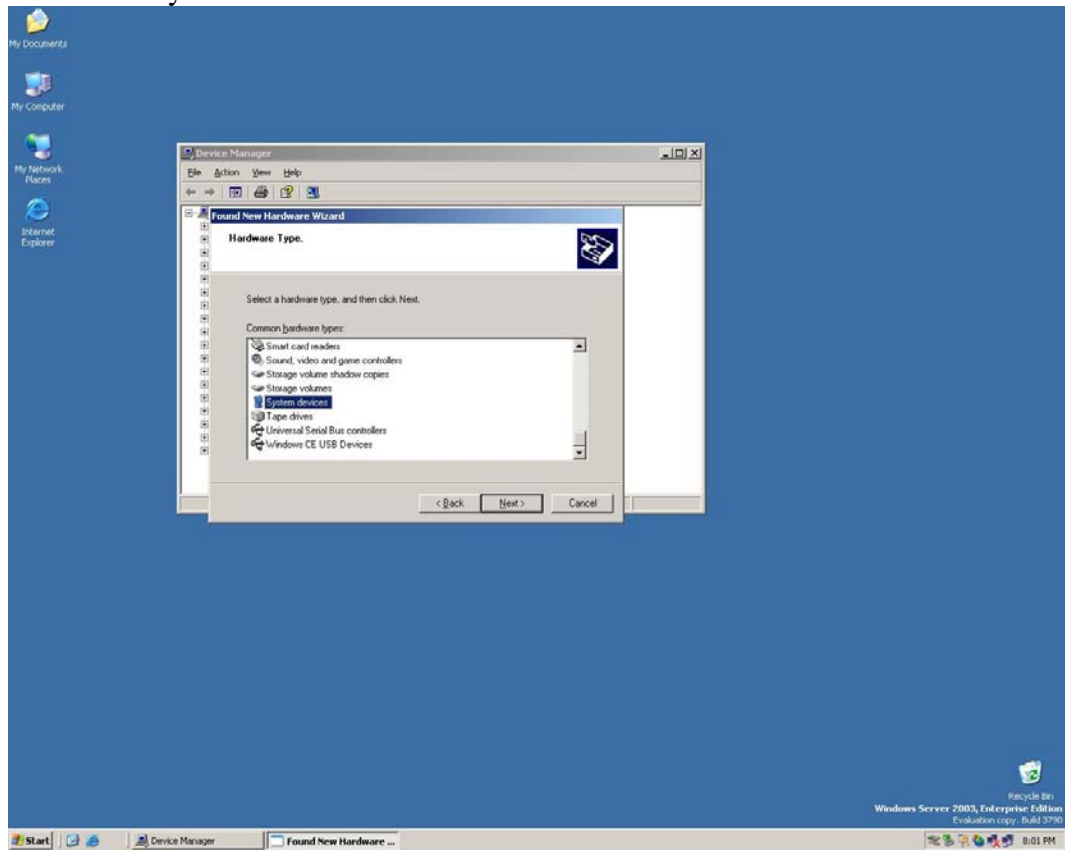
3. Choose "Install from a list or a specific location (Advanced)"



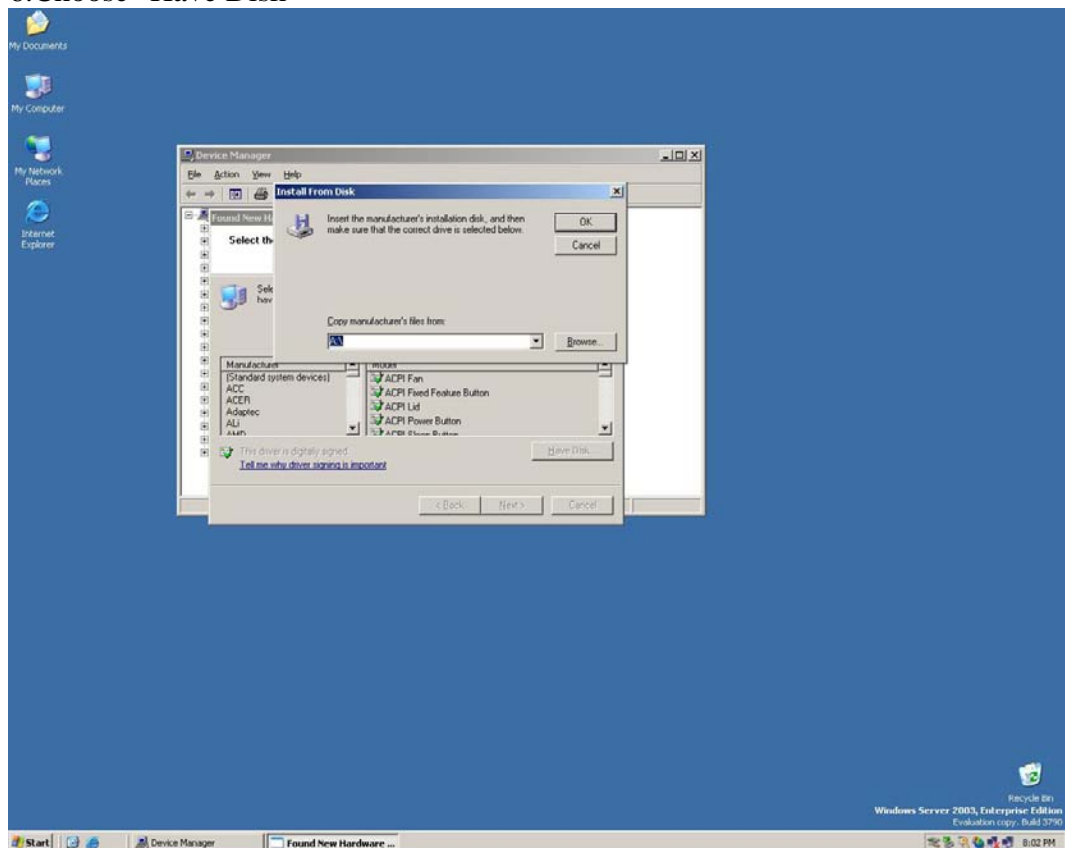
4. Choose "Don't search, I will choose the driver to install"



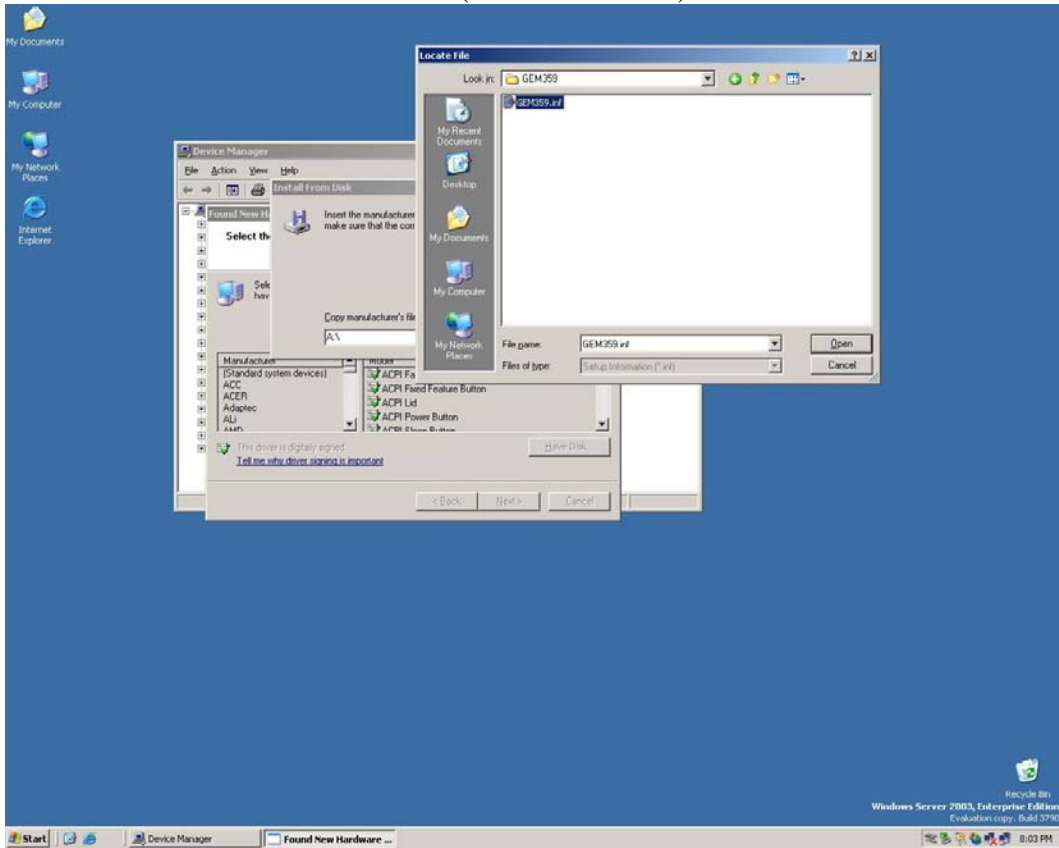
5.Choose "System Devices"



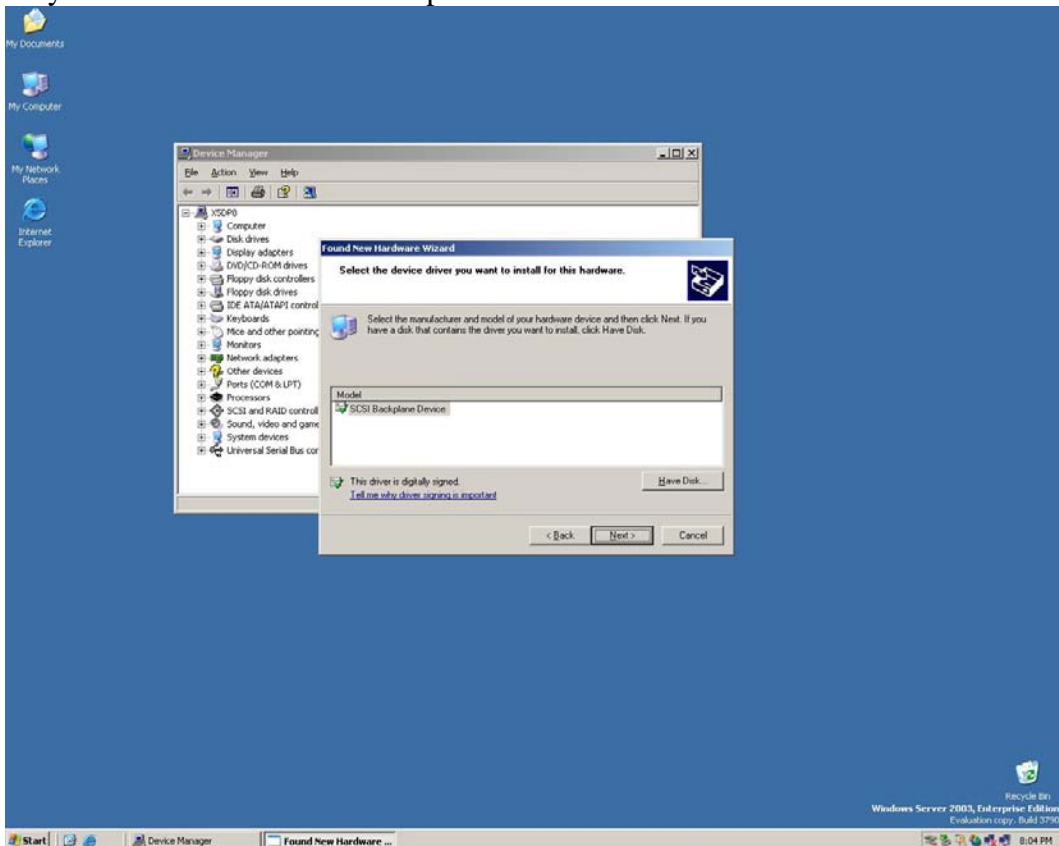
6.Choose "Have Disk"



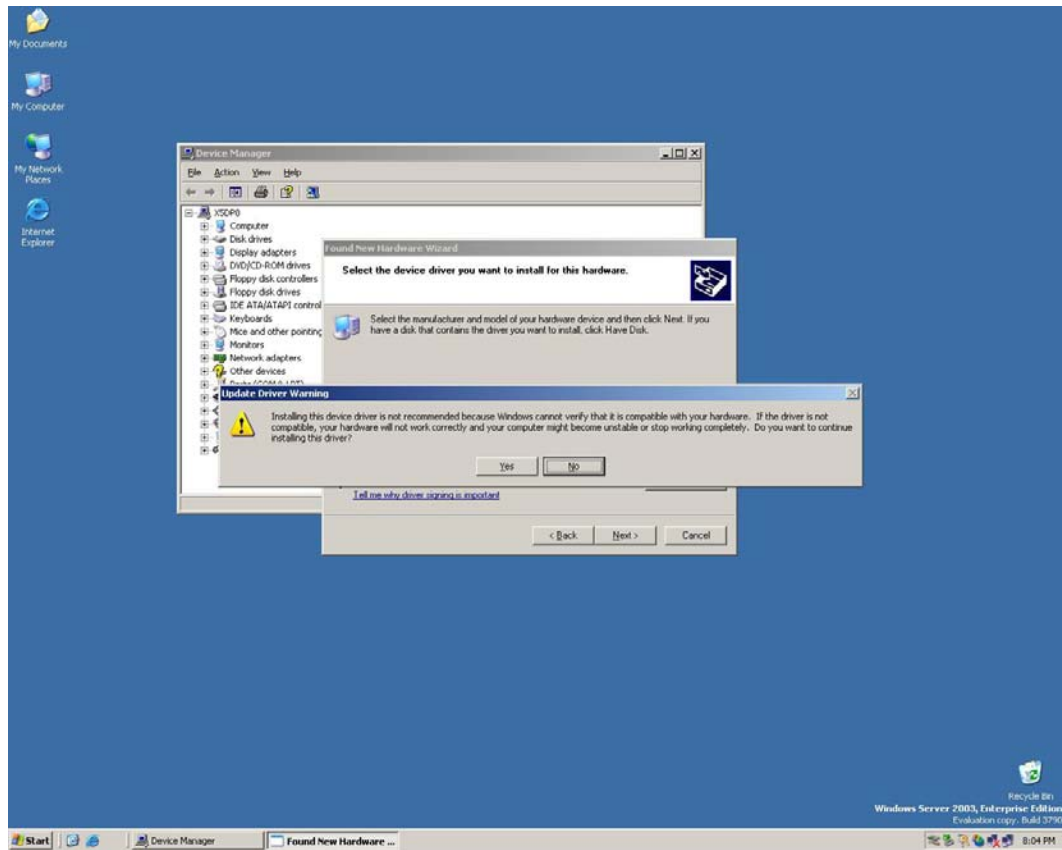
7. Give location of GEM359 driver (in the driver CD)



8. System will find a "SCSI Backplane Device"



9. Choose "Yes" to continue installation



10. GEM359 (SCSI Backplane Device) is installed completely

